

# 2010

## Year in Review



Louisiana's  
**Bayou Region**  
*Growth, prosperity ... a way of life.*

Powered by **SLEC**  
South Louisiana Economic Council  
Assumption - Lake Charles - St. Mary - Terrebonne

# Contents

---

- Letter from the CEO ..... 2
- 2010 SLEC Board of Directors ..... 3
- Year in Review..... 4
- The SLEC Family ..... 9
- Awards and Recognitions ..... 12
- Tier I Program ..... 13
- Deepwater Horizon Response ..... 15
- Special Projects ..... 17
- Looking Forward..... 18
- Facts and Figures ..... 20



[www.bayouregion.com](http://www.bayouregion.com)

985.448.4485

# Letter from the CEO

---



As we entered 2010, the Bayou Region shared a universal hope of a year where rebuilding from storms was no longer a daily concern, where employment remained strong against a backdrop of national recession and where accelerated interest in deep-water oil and gas exploration showed promise of carrying our economy well into the future. On April 20th however, things changed.

In an event that no one expected, the BP/Transocean Deepwater Horizon rig blew up taking with it eleven lives, deeply disrupting what many in the Bayou Region were anticipating as good days ahead. For the balance of the year, the incident consumed our focus as our region both benefitted from the concentration of the response in our area and suffered from its affects.

How the event ultimately will affect our economy remains to be seen. What we do know however is that as we have done before, we will preserve and possibly even prosper from this event.

Regardless, we will go forward with the same hope, optimism and ingenuity that is and always has been, the foundation of our region.

Sincerely,

A handwritten signature in black ink that reads "Vic Lafont". The signature is fluid and cursive.

Vic Lafont  
Chief Executive Officer

## 2010 Training and Events

- **January 27** – Regional Marketing Committee Meeting
- **February 20** – Business Boot Camp: Principals of Partnership Selling

## 2010 SLEC Board of Directors

---

**Mr. Jake Giardina**  
Chairman of the Board

**Dr. Shawn Mauldin**  
Vice President

**Dr. Ken Rachal**  
Secretary/Treasurer

**Mr. Scott Melancon**  
At Large

**Dr. Ridley Gros**

**Dr. Stephen Hulbert**

**Mr. Lindy Hoffman**

**Mr. Jim Davis**

**Mr. L.J. Folse**

**Mr. Clifford Smith**

**Mr. Mike Guidry**

**Vic Lafont**  
President/CEO



### 2010 Training and Events

- **March 5** – Pye Theriot Credentialing Ceremony
- **March 15** – Brown Bag & Business Series – Importance of Bank Reconciliations

# Year in Review

---

## ***Babington Hall***

Working with Nicholls State University, SLEC is underway with renovations of Babington Hall to house SLEC's administrative offices. Engineering has begun to release bids to remodel the central, one-story section. Funds have been secured from LED and through the Capital Outlay Program. Construction is expected to begin in the early part of 2011. Future plans call for the renovation of both towers to include more service center space and executive housing units for corporation hosting events or in times of emergency.

## ***Bayou Region Center for Economic Growth and Technology***

Through the Center for Economic Growth, SLEC operates and has planned a series of business incubators and service centers. Currently, a business incubator is located in Thibodaux on LA Highway 1, and a business service center is located in Grand Isle. A market study of Port Fourchon was conducted last year to examine the need for a business service/media center. SLEC is currently working with Nicholls State University on renovations to Babington Hall to house SLEC's offices and a third service center.

## ***Entrepreneur Training Series***

Small and emerging business and entrepreneurial activities are the lifeblood of a healthy and growing economy. The Bayou Region parishes of Assumption, Lafourche, St. Mary and Terrebonne are defined by a large number of these businesses with their support being a key component of future economic growth. The Entrepreneurial Training Series is an intensive, 10-week course designed to assist small business owners by providing concentrated exposure to the key skills and concepts required for operation of a successful business.

## **2010 Training and Events**

- **March 18** – Brown Bag & Business Series: Get Noticed, Get Paid: The Essentials of Small Business Marketing
- **March 18** – Regional Economic Developers Meeting



The program is open to residents of the parishes of Assumption, Lafourche, St. Mary and Terrebonne or to any company doing business in these parishes. A limited number of spaces are available for each series. To date, over 50 Bayou Region companies have graduated from the program. The series is taught at least twice per calendar year.

### **Technical Assistance Network**

An innovative and effective program designed to assist businesses affected by Hurricanes Katrina and Rita, the Technical Assistance Network concluded in 2010 with hundreds of Bayou Region business assisted, 108 of them in 2010. Funded through a grant from the U.S. Department of Housing and Urban Development, and in coordination with Louisiana Economic Development, TAN was designed to help stabilize and grow small businesses by providing technical assistance support. (See table on page 28)

Services provided include:

- Entrepreneurial Training
- Workshops and Seminars
- One-on-One Business Counseling
- Business Plan Development
- Marketing Research & Strategy
- Strategic Planning
- Management Assistance
- Financial Analysis
- Record Keeping Systems Training
- Technology Advancement.

### **2010 Training and Events**

- **March 22** – Brown Bag & Business Series: Accounting for Credit Cards in Business
- **March 27** – Business Boot Camp: Essential Technology for Small Business



## **Small Business Development Center**

The Bayou Region Small Business Development Center is located at the SLEC offices on the campus of Nicholls State University and is part of a state and national consortium of similar small business development networks. The center serves businesses in Assumption, Lafourche, St. Mary and Terrebonne parishes by providing managerial and technical assistance to small business owners. SLEC maintains a close relationship with the Small Business Development Center in order to continue to provide high-quality assistance to Bayou Region small businesses. (See table on page 26)

Approximately 449 Bayou Region companies – 25 percent startup businesses and 75 percent existing businesses – were assisted in 2010.

## **SCORE**

SLEC has been approached by a national entrepreneur support organization, SCORE, to establish a Bayou Region Chapter of this premier source of free and confidential small business advice for entrepreneurs. Known as “Counselors to America’s Small Business” SCORE is a nonprofit association dedicated to educating entrepreneurs and helping small business start, grow and succeed nationwide. SCORE is a resource partner with the U.S. Small Business Administration. A chapter, once formed, would have a strong working relationship with SLEC and its small business services.

## **Small and Emerging Business Development**

SLEC is the regional coordinator of the Small and Emerging Business Development Program. This innovative and effective program makes it easy for Bayou Region small businesses to engage essential professional services in areas such as entrepreneurial training, marketing, computer skills, accounting, business planning, legal and industry-specific assistance. Through the SEBD program, companies can have a percentage of the costs of these services offset to make accessing these critical services possible. SEBD assisted 36 Bayou Region companies in 2010. (See table on page 26)

## **2010 Training and Events**

- **March 29** – Brown Bag & Business Series: Document Organization Procedures
- **April** – Entrepreneur Training Series 21 begins



### Eligibility for Small and Emerging Business:

- Ownership and Control - At least 51% of the company must be owned and controlled by one or more Small and Emerging Business Persons.
- Principal Place of Business - The firm's principal place of business must be Louisiana.
- Lawful Function - The company has been organized for profit to perform a lawful, commercially useful function.
- Business Net Worth - The business' net worth at the time of application may not exceed \$1.5 million.
- Full Time - Managing owners who claim Small and Emerging Business person status must be full-time employees of the applicant firm (20 or more hours per week).
- Job Creation - An applicant firm anticipates creating new full-time jobs.

### ***Community Development Institute***

Seven Bayou Region business leaders, sponsored by SLEC, participated in the 2010 Community Development Institute Aug. 2 to 6 at the University of Central Arkansas in Conway, Ark.



With funding from the Louisiana Department of Economic Development, SLEC provided scholarships for a regional team to attend CDI, where they trained together and then returned to implement and apply the latest in community and economic development practices to Bayou Region communities.

### **2010 Training and Events**

- **April 21** – Regional Marketing Committee Meeting
- **July 8 to 11** – Manning Passing Academy

Representing the Bayou Region were Kathy Benoit, president and CEO of the Thibodaux Chamber of Commerce; Gretchen Caillouet, Lafourche Parish Grants and Economic Development Director; Cullen Curole, Economic Development Director for the South Central Planning and Development Commission; Cindy Cutrera, Economic Development Manager for the Port of Morgan City; Lin Kiger, president and CEO of the Lafourche Chamber of Commerce; Donna Meyer, CEO of the St. Mary Parish Chamber of Commerce; and Drake Pothier, president of the Houma-Terrebonne Chamber of Commerce.

Benoit, Caillouet, Curole, Meyer and Pothier completed the third and final year of the program and graduated; Cutrera completed the second year; and Kiger completed the first year.

Gretchen Caillouet passed the Community Development Council (CDC) certification exam successfully completing her PCED title.



## 2010 Training and Events

- **July 21** – Regional Marketing Committee Meeting
- **August 12** – Regional Economic Developers Meeting

## **The SLEC Family**

---

### **LA 1 Coalition**

The LA 1 Coalition seeks to secure the highway infrastructure from US Hwy. 90 to Port Fourchon/Grand Isle.

For over 50 years, a relatively small region of south Louisiana has weathered the ups and downs of the oil and gas industry while providing critical services that literally help to fuel our nation. The convenient location of Port Fourchon has made this southernmost port in Louisiana the port of choice for the expanding industry, and as offshore energy production increases, so will activity at this important service center. Unfortunately, this increased activity will also produce increased strain on an already overburdened two-lane state highway—LA Hwy. 1, the only road connecting Port Fourchon to the rest of the country. A road originally built decades ago to ease travel for those living in the communities of rural southern Lafourche parish has grown to become a critical link in domestic energy production.

The LA 1 Coalition office is located on the campus of Nicholls State University, within the offices of the South Louisiana Economic Council.

### **Restore or Retreat**

Restore or Retreat is a non-profit coastal advocacy group created by coastal Louisiana residents and stakeholders who recognize that the Barataria and Terrebonne basins are the two most rapidly eroding estuaries on earth, and that this erosion represents an economic and ecological crisis. With a growing membership of over 250 businesses and individuals, ROR seeks to identify and expedite the implementation of aggressive, large-scale restoration projects to protect this irreplaceable region.

### **2010 Training and Events**

- **August 24** – LSU Mobile Unit
- **September 1** – Small Business Workshop



For the past six years, ROR has been working diligently to advocate on the state and federal level for the comprehensive, long-term restoration projects that our area so desperately needs and deserves:

ROR has been a consistent voice for the Barataria-Terrebonne basins in coastal planning efforts by the State of Louisiana and U.S. Army Corps of Engineers.

ROR has worked with Senators Reggie Dupre and Butch Gautreaux during the 2007 legislative session for the passage of Senate Concurrent Resolution 34, which requests that the state include the Third Delta feasibility study and pipeline sediment delivery in future coastal plans.

ROR has engaged the services of Coastal Environments, Inc. of Baton Rouge to conduct scientific review and recommendations on how restoration and protection projects can most effectively work in concert throughout the Barataria-Terrebonne basins. The project is titled, “A Plan for Survival for the South Lafourche-South Terrebonne Region.”

ROR has played an integral role in getting the Davis Pond freshwater diversion project operating to its maximum potential.

### ***Gulf Economic Survival Team***

The Gulf Economic Survival Team was created by then-Louisiana Lt. Governor Scott Angelle, at the request of Governor Bobby Jindal, in response to President Obama’s May 27 announcement of a deepwater drilling moratorium in the Gulf of Mexico. Since that time, GEST has actively called for expedited implementation of additional safety precautions in the Gulf and a swift end to the moratorium to save American jobs. Support from individuals, organizations and business along the Gulf Coast and throughout the world has been remarkable with over 175,000 people having signed the online petition to date.

### **2010 Training and Events**

- **October 7** – Economic Outlook Luncheon
- **November 3** – Regional Marketing Committee



GEST is now a non-profit organization housed in the SLEC offices. Lori LeBlanc is Executive Director of GEST project.

The organization has made great strides towards creating awareness of the economic hardships being caused by deepwater moratorium and the economic importance of the Gulf of Mexico energy industry to Gulf Coast communities and the entire nation. GEST has also been actively involved in helping to resolve very complex permitting issues that have caused a “de facto” moratorium in the shallow waters of the Gulf. GEST serves as a liaison between state government, the federal government and shallow water operators to help this segment of the industry comply with new regulatory requirements and get back to work fueling America.



# Awards and Recognitions

---

## **2010 Bill Miller Award**

Vic Lafont, SLEC CEO, was honored Aug. 6 by the Arkansas Community Development Institute for his significant contributions to the practice of community and economic development.



Lafont received the 2010 Bill Miller Award, presented at the annual Community Development Institute held at the University of Central Arkansas in Conway, Ark. The award is named for Bill Miller, the longest tenured director of CDI, a man who saw the Institute through its early years, steered it to success and held it together during tough times. It is the highest award given by the Arkansas CDI.

Lafont established the first satellite Community Development Institute and held it at Nicholls State University to provide training to south Louisiana economic developers rebuilding after Hurricane Andrew. As a result of his visions and leadership, the critical mass of trained community developers grows larger in Louisiana as well as throughout the United States with seven well-established CDI training locations.



## Tier I Program

---

In addition to providing a portion of SLEC's director and administrative support staff salaries, the grant supported the following activities:

Updated the Bayou Region Profile that includes listings of industrial parks, top economic drivers, recent announcements, and planned infrastructure upgrades.

Maintained the Bayou Region web-based inventory of buildings and sites. Over the past 12 months, 1 building and 14 sites were added. Current listings include 6 buildings and 40 sites.

Prepared an inventory of Education Assets in the region.

Prepared a report on direct foreign investment in the region.

Prepared 4 quarterly labor reports and the Bayou Region Business Barometer.

Updated the Bayou Region Business Development Plan and SLEC's target industry sectors. Sectors targeted for attraction are:

- Deep water rig fabrication and related equipment manufacturing
- Shipbuilding
- Marine transportation and air logistic services
- Environmental and geo-technical services
- Water management systems
- Bio-fuels and alternative energy
- Petro-chemical processing
- Business services
- Food processing

Met with 10 target industries in Dallas, Houston, and Tyler, Texas; Colorado and Utah.



Made 33 retention visits (*See table on page 27*)

Hosted 4 Bayou Region Marketing Committee Meetings.

Prepared the “Bayou Region Business Guide,” a guide on how to start a business in the Bayou Region.

### **Bayou Region Economic Development Marketing Committee**

The Bayou Region Economic Development Marketing Committee is comprised of the economic development professionals within the region. Its mission is to review industry attraction leads for best fit within the region, to review funding priorities for the region and provide a unified voice on matters of mutual interest to the four parishes. The marketing committee consists of representatives of the South Louisiana Economic Council, Lafourche Economic Development, St. Mary Economic Development, Assumption Parish Economic Development, City of Thibodaux Economic Development, Entergy Economic Development, Louisiana Economic Development, Bayou Industrial Group, South Central Industrial Association, Port of Morgan City, Greater Lafourche Port Commission, South Central Planning and Development Commission, Louisiana Small Business Development Center, Houma-Terrebonne Chamber of Commerce, Chamber of Lafourche and the Bayou Region, Thibodaux Chamber of Commerce, St. Mary Chamber of Commerce and the Assumption Area Chamber of Commerce. Four meetings of the committee were held in 2010.



# ***Deepwater Horizon Response***

---

## ***Claims Support and Technical Assistance***

The South Louisiana Economic Council was selected to provide one-on-one support to businesses affected by the BP Deepwater Horizon oil spill. Through a cooperative effort between SLEC, Louisiana Small Business Development Centers, Nicholls State University, South Central Planning and Development Commission and Greater New Orleans, Inc., consultants were made available to guide businesses in determining damages based on lost income, reduction in sales, market loss, physical damage and other criteria.

Business Recovery Centers were located and staffed in the following locations:

- SLEC Office at Nicholls State University
- South Lafourche Parish Library
- Grand Isle Community Center
- Terrebonne Parish Consolidated Government Tower.

As of November 15, 2010, 56 clients have been assisted.

## ***Economic Development Assessment and Evaluation***

In July 2010, the National Incident Command responsible for responding to the oil spill formed an Economic Solutions Team (EST) within its structure. A request for assistance was made to the International Economic Development Council, in partnership with the National Association of Development Organizations and the Business Civic Leadership Center, to perform economic development needs assessments in 21 impacted communities along the Gulf Coast. This effort was carried out through a grant from the U.S. Department of Commerce's Economic Development Administration.



To accomplish this, the EST, in conjunction with SLEC, deployed assessment teams of economic development experts to conduct two-and-a-half-day site visits in the Bayou Region. These experts were drawn from across the country and from different federal agencies involved with the recovery of communities impacted by the oil spill, and included staff members from IEDC, NADO, and BCLC.

The purpose of each site visit was to meet with a wide swath of key stakeholders from different sectors of the local community, including economic development leaders, political leaders, local government officials, business owners, workforce intermediaries, educational leaders, financial sector representatives, etc. Based on stakeholder-identified economic development needs, the assessment teams identified possible short- and medium-term strategies towards economic recovery that communities could consider.

### ***Disaster Management, Research and Business Resource Program***

The SLEC Center for Economic Growth and Technology was deeply engaged in the support of the recovery efforts in South Louisiana following the Deepwater Horizon oil spill. SLEC worked to support and strengthen leadership in this field by providing training, education and research programs through an interdisciplinary program taught by expert faculty. The SLEC Disaster Management, Research and Business Resource Program currently includes:

*Disaster Management Training Facility & Environmental Business Incubator:*

1. Disaster Operations
2. Sustainable Technologies & Services
3. Environmental Hazards and Mitigation
4. Leadership



## ***Special Projects***

---

### ***Manning Passing Academy***

The Manning Passing Academy, now in its 16<sup>th</sup> year, is hosted by Nicholls State University with deep support from SLEC. The camp is operated by the first family of football: Archie, Cooper, Peyton and Eli Manning ... and is always an integral part of their lives. As such, their summer vacations revolve around the annual football camp. The Mannings are always the first to arrive and the last to leave. They eat and sleep on campus along with the rest of the campers and staff. The camp will continue in 2011 with possible long-term commitments on the horizon.



# Looking Forward

---

As SLEC enters a new decade it begins a fresh approach with a new slate of incoming board members and areas of focus.

The new areas of focus include:

## ***Update Bayou Vision***

Bayou Vision was a regional strategic plan prepared a number of years ago and a fresh vision and priority objectives needs to be prepared. Updating the plan will be a multi-year effort including planning and visioning public meetings and forums; document drafting, approval, and distribution; and implementation.

## ***Economic Development Programs and Services***

This service area provides the traditional business development services including retention and expansion; attraction; and international trade.

## ***Small Business Development***

This service interacts between small businesses; the NSU's Small Business Development Center; financial and regulatory agencies; and a network of small business service providers. SLEC assists small business find access to capital, to receive business start-up training, business plan development assistance, and marketing assistance.

## ***Community Issues and Government Affairs***

A major function of SLEC is to represent the interests of business at local, state and federal levels of government.

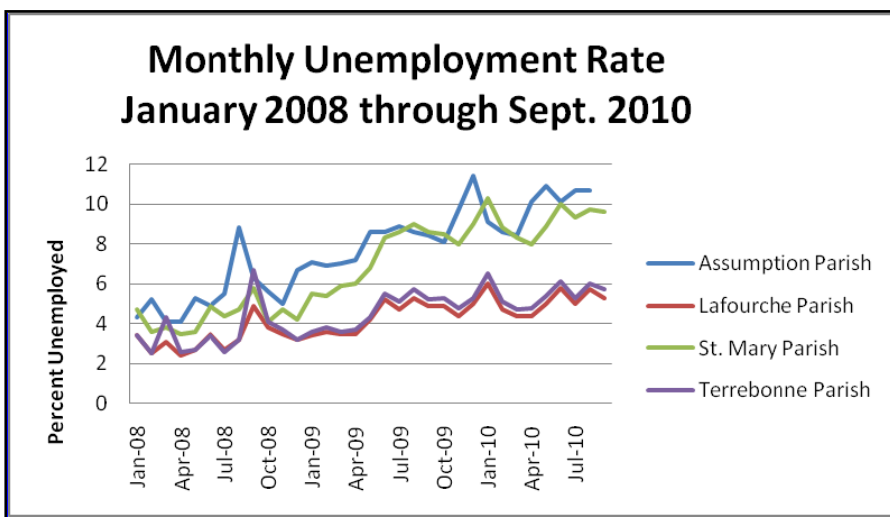
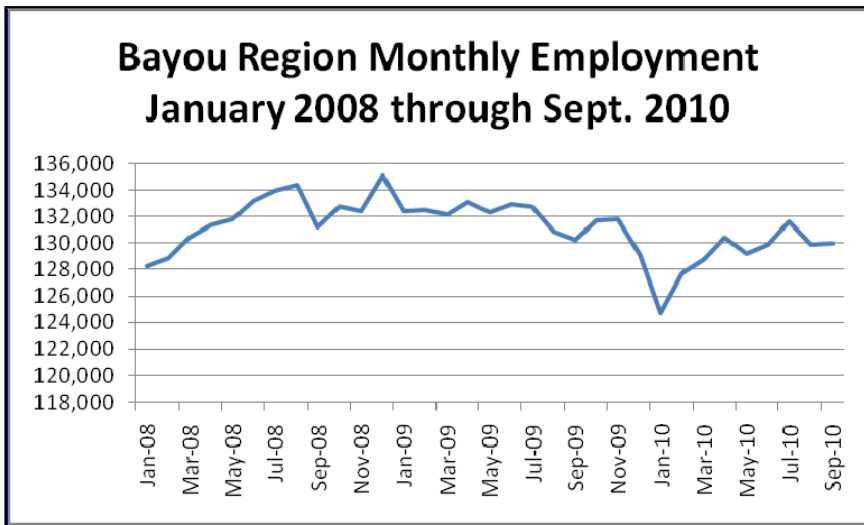


## ***Bayou Region Center for Economic Growth and Technology***

Through the Center for Economic Growth, SLEC operates and has planned a series of business incubators and service centers. Currently, a business incubator is located in Thibodaux on LA 1, and a business service center is located in Grand Isle. A market study of Port Fourchon was conducted last year and SLEC is currently working with Nicholls State University on renovations to Babington Hall to house SLEC offices and a third service center.

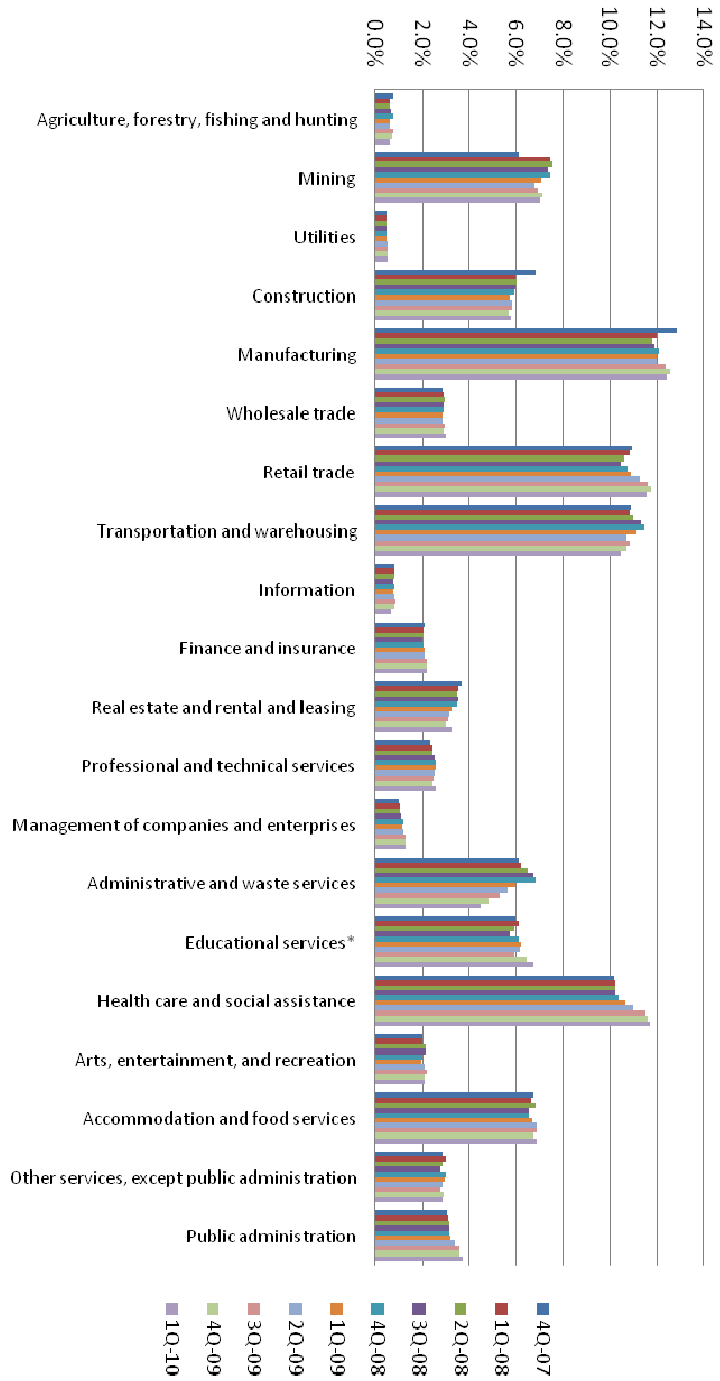


# Facts and Figures



## Bayou Region Quarterly Wage & Employment by Sector

Louisiana Workforce Commission



**REAL GDP**

Change from previous quarter at annual rate, seasonally adjusted



Source: Department of Commerce

**UNEMPLOYMENT RATE**

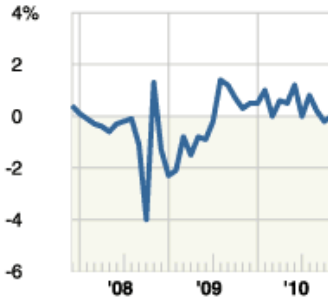
Seasonally adjusted



Source: Bureau of Labor Statistics

**INDUSTRIAL PRODUCTION**

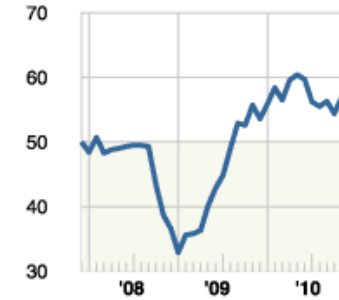
Change from previous month, seasonally adjusted



Source: Federal Reserve

**PURCHASING MANAGERS' INDEX**

Reading above 50 indicates expansion in manufacturing activity

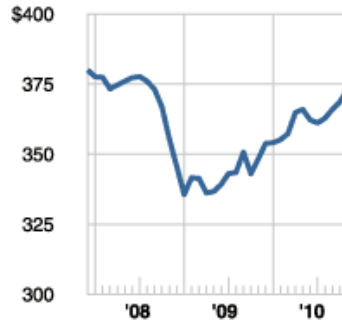


Source: Institute for Supply Mgmt.



**RETAIL SALES**

In billions, seasonally adjusted



Source: Department of Commerce

**CONSUMER SPENDING**

Personal consumption expenditures, change from previous month, seasonally adjusted



Source: Department of Commerce

**CONSUMER CONFIDENCE**

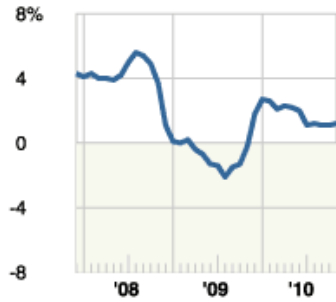
Index stood at 100 in 1985, its base year



Source: Conference Board

**CONSUMER PRICES**

Change from previous year, not seasonally adjusted



Source: Bureau of Labor Statistics



**PRODUCER PRICES**

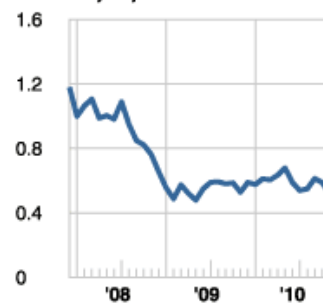
Change from previous year, not seasonally adjusted



Source: Bureau of Labor Statistics

**HOUSING STARTS**

Annual rate in millions of units, seasonally adjusted



Source: Department of Commerce

**EXISTING-HOME SALES**

Annual rate, in millions of units, seasonally adjusted



Source: National Association of Realtors

**TRADE DEFICIT**

In billions, seasonally adjusted



Source: Department of Commerce



## 2010 SLEC Expansion-Attraction Results

2010 Quarter	Activity			
	Meeting	LED Lead	ED Suites	Targets
First	9	9	1	
Second	6	6	1	100 New Leads
Third	3	9	2	10 Appointments
Fourth	2	5	2	15 Suspects
Total:	20	29	6	
Notes:				
Meetings are face-to-face meetings with local businesses				
LED Leads are unidentified companies looking for land and/or buildings				
ED Suites are requests received through the Web Site for expansion information				
Targets are list of company in out target industry sectors and out of state appointments made				



[www.bayouregion.com](http://www.bayouregion.com)

985.448.4485

## SBDC and SEBD Clients Served, 2010

### SBDC – SLEC's Represented Parishes

Parishes	Tori	Mohannad	Susan	Paige	Diane	Total
Lafourche	21	21	95	18	13	168
Terrebonne	28	36	83	19	21	187
St. Mary	3	1	5	1	3	13
Assumption	1	1	6	0	0	8
						<b>376 (Total Clients)</b>

### SBDC – SLEC's Outer Parishes

Parishes	Tori	Mohannad	Susan	Paige	Diane	Total
St. James	1	1	0	0	1	3
Ascension	0	0	3	1	0	4
St. Charles	0	0	3	1	1	5
Jefferson	13	5	7	2	4	31
Orleans	1	0	2	2	0	5
Cameron	1	0	0	0	0	1
East Baton Rouge	0	0	2	0	0	2
St. Bernard	1	0	0	0	0	1
East Carroll	0	0	1	0	0	1
East Feliciana	0	0	1	0	0	1
Iberia	0	0	0	1	0	1
Lafayette	0	1	0	0	0	1
Plaquemines	0	0	1	1	0	2
Vermillion	0	1	1	0	0	2
						<b>60 (Total Clients)</b>

### SEBD – SLEC's Represented and Outer Parishes

Parishes	Total
Lafourche	13
Terrebonne	15
St. Mary	2
St. John the Baptist	1
St. Charles	1
East Baton Rouge	2
Orleans	1
<b>36 (Total Clients)</b>	

[www.bayouregion.com](http://www.bayouregion.com)

985.448.4485

## Business Retention Company Visits, 2010

Company	Parish	City
Abdon Callais Offshore	Lafourche	Golden Meadow
Blanchard Contractors, Inc.	Lafourche	Cut Off
Bordelon Marine	Lafourche	Lockport
Cabot Corporation	St. Mary	Franklin
Columbian Chemicals Company	St. Mary	Franklin
Fuel Solutions, LLC	Lafourche	Lockport
Gulf Offshore Logistics	Lafourche	Raceland
Kevin Gros Consulting and Marine Services, Inc.	Lafourche	Larose
Lafourche Arc	Lafourche	Thibodaux
Oil States Industries, Inc.	Terrebonne	Houma
Shamrock Management LLC	Terrebonne	Houma
United Tugs	Lafourche	Cut Off
Lafourche Sugars	Lafourche	Thibodaux
Computerized Accounting Support Services, LLC	Terrebonne	Houma
Accounting Concepts	St. Mary	Morgan City
CCR's	St. Mary	Morgan City
The W.L. Gaiennie Company	Lafourche	Thibodaux
Premier Properties of the South	Terrebonne	Houma
Reeling Good Charters	Livingston	Walker
Lab-A-Daux Home Improvements	Lafourche	Thibodaux
Crabs, LLC	Lafourche	Larose
Attakapas Adventures	Assumption	Napoleonville
Alpha Plasma Manufacturing	Terrebonne	Houma
Lataerre Partners	Lafourche	Thibodaux
Chaisson's Outboard Repair	Assumption	Napoleonville
Jambon Boat Rentals	Lafourche	Golden Meadow
Badeaux's Seafood Restaurant & Buffet	St. Charles	Des Allemands
Bobby Lynn's Marina	Lafourche	Golden Meadow
Nelson Duet Oyster Company	Lafourche	Galliano
Barrios Seafood To Go	Lafourche	Golden Meadow
Aldoph Oysters	Lafourche	Thibodaux
Bayou Country Big Pot Boys	Lafourche	Thibodaux
Bait House Seafood	Terrebonne	Chauvin

[www.bayouregion.com](http://www.bayouregion.com)

985.448.4485



## Technical Assistance Network 2010

Performance Update	JAN	FEB	MAR	APRIL	MAY
Recruiting/Intake (Marketing, Outreach, Data Collection)	3	7	0	0	0
Entrepreneurship Series (Multi-week Training Series)	0	0	0	0	0
Specialized Business Workshops (Business Bootcamp)	0	1	1	0	0
General Workshops/Seminars (Various topics)	0	0	3	1	0
One-on-One Business Assessment (Initial meeting and assessment)	0	0	0	0	0
One-on-One Business Counseling (Additional counseling hours)	0	0	0	0	0
Marketing/Advertising Counseling	154	35.5	222.5	25	0
Financial/Accounting Counseling	68	108.25	125	132.75	31
Business Development counseling	8	42	22	94	0
Business Plan Finalized (Upon completion/sign off)	0	0	0	0	0

[www.bayouregion.com](http://www.bayouregion.com)

985.448.4485

The South Louisiana Economic Council is a regionally focused economic development agency serving the parishes of Assumption, Lafourche, St. Mary and Terrebonne. Formed in 1983, SLEC provides industrial assistance and programs designed to create economic growth for the Bayou Region.

For more information, contact:

***South Louisiana Economic Council, Inc.***

***P.O. Box 2048 – NSU***

***Thibodaux, LA 70310***

***310 Ardoyne Drive – SLEC Building***

***Nicholls State University***

***Phone: 985.448.4485***

***Fax: 985.448.4486***

***[www.bayouregion.com](http://www.bayouregion.com)***

**SLEC**

**South Louisiana Economic Council**

Assumption • Lafourche • St. Mary • Terrebonne

